

# Autodesk 3D Studio Max

[Autodesk 3D Studio Max](#) is a professional 3D computer graphics program for making 3D animations, models, games and images.

3D Studio Max 8 and 9 have been tested and confirmed working with the HPL1 engine, modern alternatives have yet to be tried.

## Setup

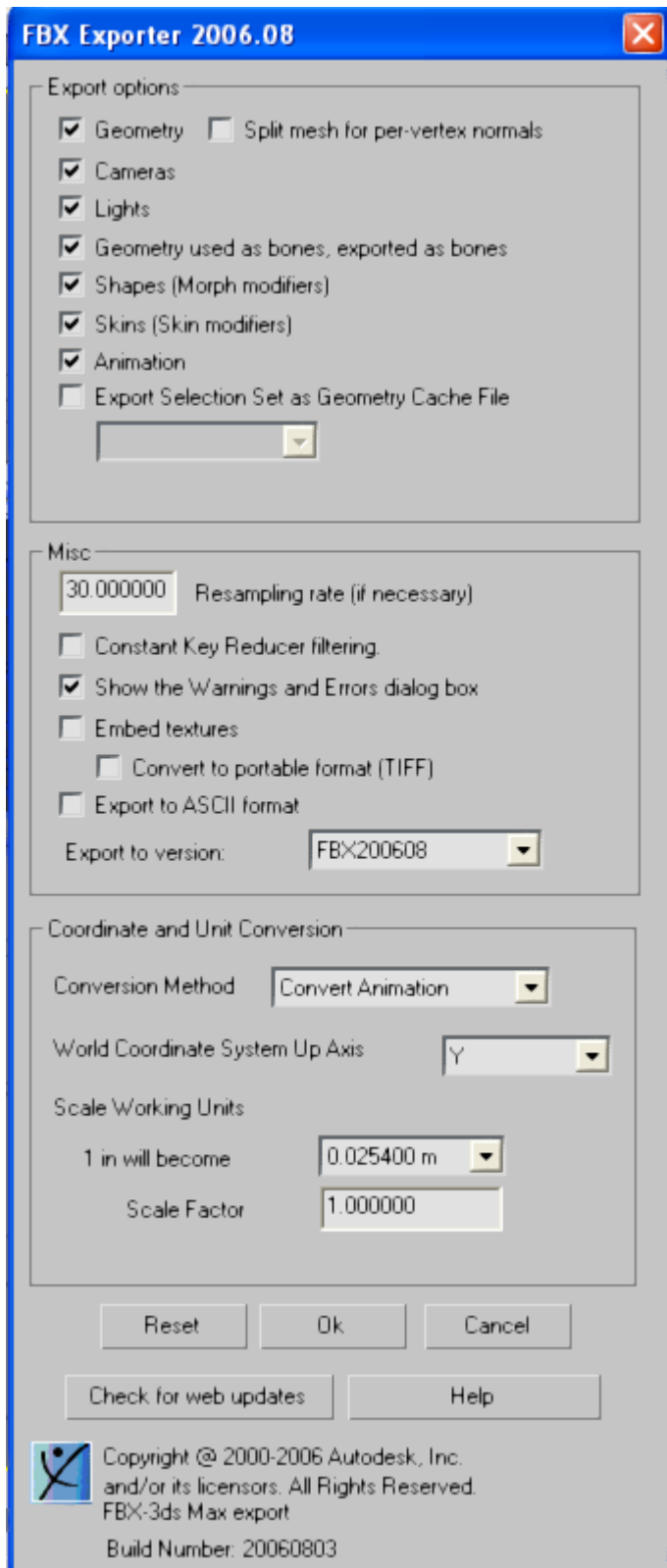
Download collada for Max [here](#).

You may also export with the **FBXCollada** option that comes with 3D Studio Max.

## Exporting

Using Max is a fairly simple process, for this tutorial we are going to make a little cube, start of clicking on the **Box** button in the **Object Type** window to your right, and drag your mouse around in the viewport, make sure to set the cube's length width and height to 20\*20\*20 in the **Modify** window. Apply a texture to it (preferably lambert) and export it under File > Export

Make sure you choose **Autodesk (\*.FBX,\*.DAE)** as the export option and that you use the same presets as the following image.



The units must be set to Meter just like in Maya, otherwise the model will appear to be bigger than intended.

Don't forget to also save the model with the .dae extension, you must do this manually in the file name box otherwise it will assume you want the .fbx extension.

## Important information on images

The material file (.mat) is an XML file that contains information on what images is used in the material to create the texture and other properties. Unlike it's successors, the HPL1 engine does NOT generate material files automatically. Instead you will have to create them manually by using the HplHelper program.

You can download the tools [here](#) if you haven't already.

From:

<https://wiki.frictionalgames.com/> - **Frictional Game Wiki**

Permanent link:

[https://wiki.frictionalgames.com/hpl1/third\\_party\\_tools/3d\\_studio\\_max?rev=1581002161](https://wiki.frictionalgames.com/hpl1/third_party_tools/3d_studio_max?rev=1581002161)

Last update: **2020/02/06 15:16**

