

DDS Texture Export

Overview

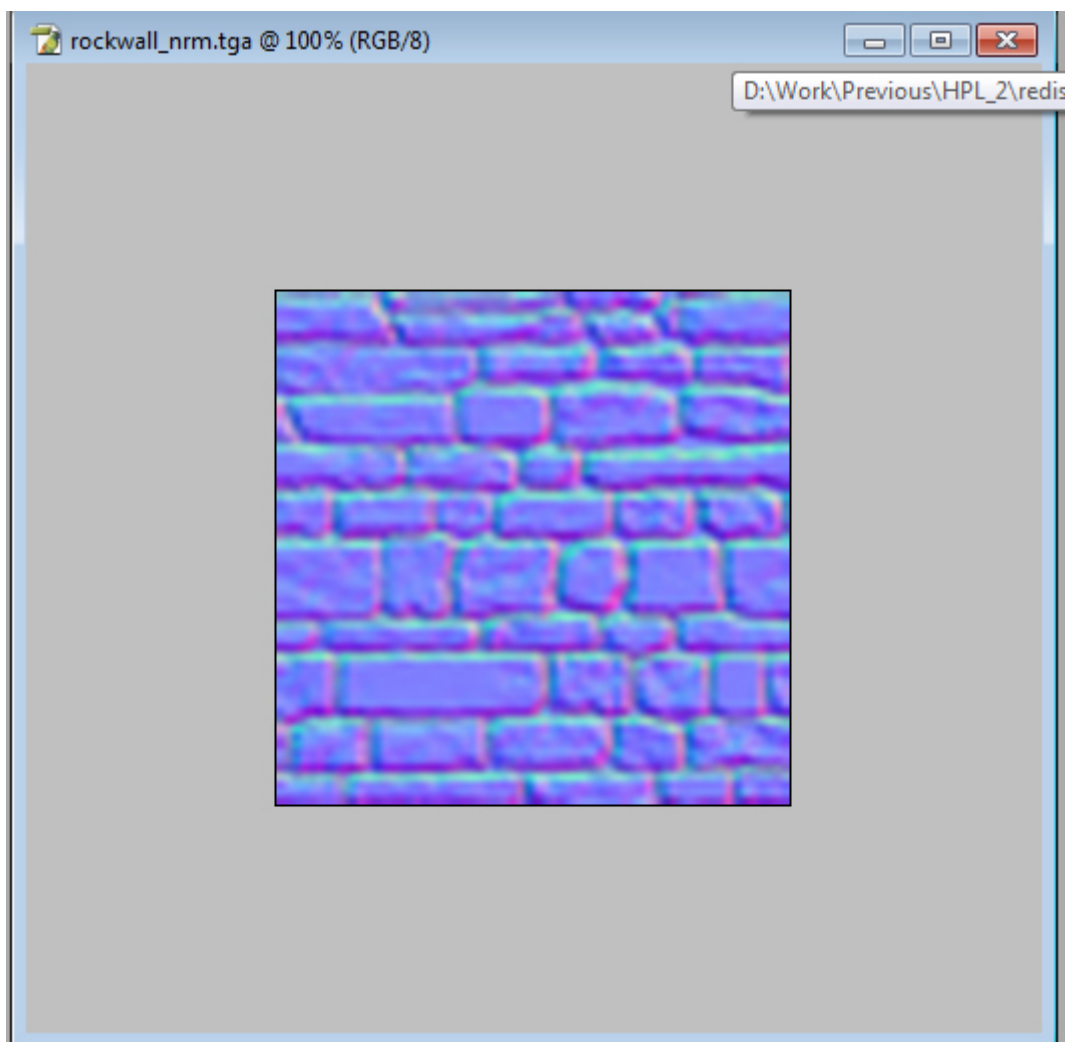
This tutorial will go through how to export a normalmap in the 3Dc format using the [NVidia Texture Tools](#).

The pretty much the same pattern can be used to export a diffuse, specular, etc texture, but normal map has some extra stuff so using this in this tutorial.

Steps

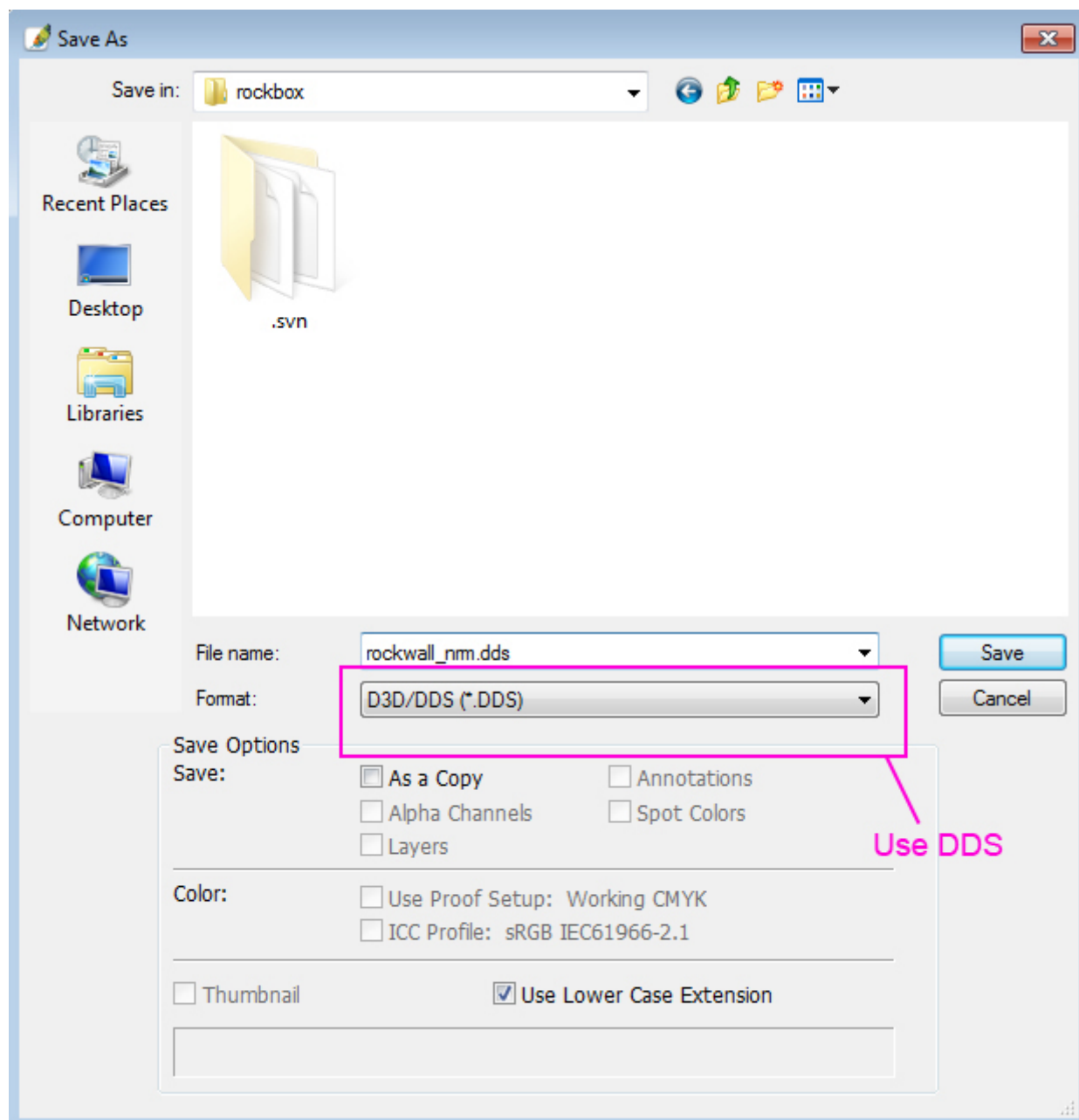
1) You texture

Here is the texture that we want to export as a DDS.



2) Save as DSS

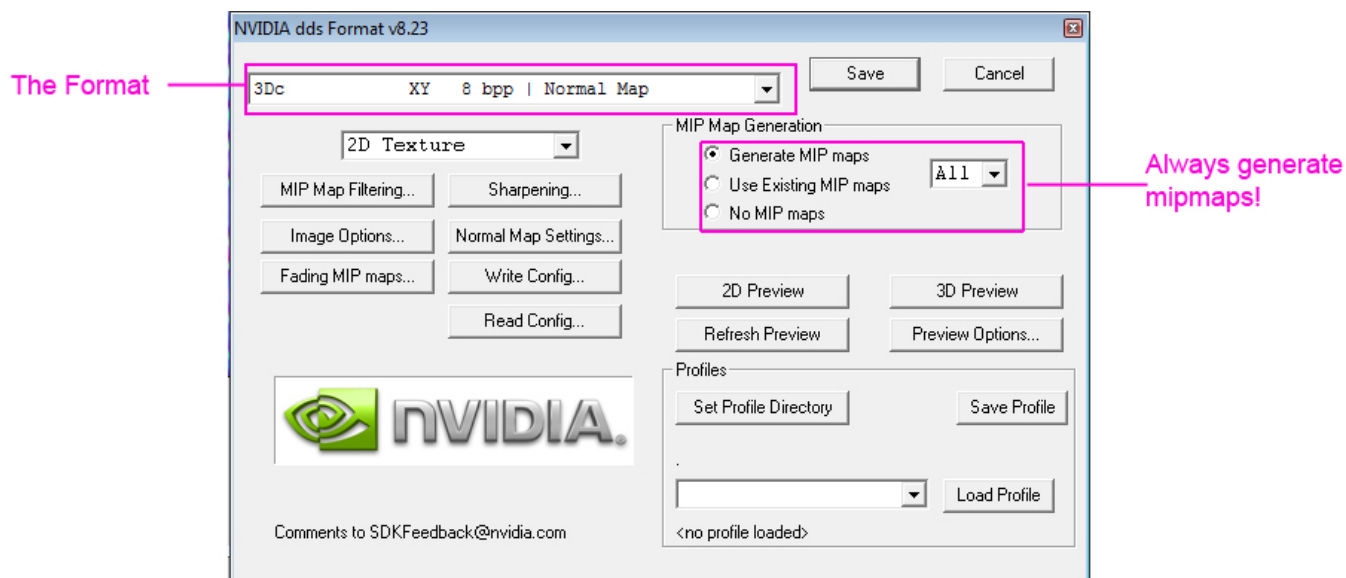
Choose DDS as the format you want to save in.



3) The Save dialog

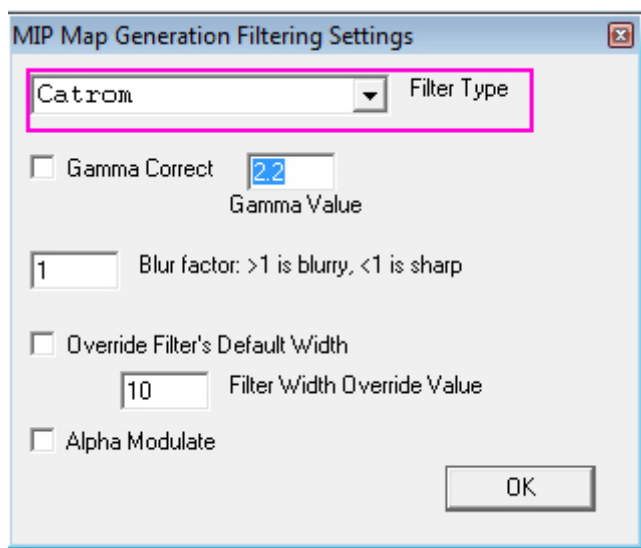
Choose the format at the upper left of the dialog. Here we will choose 3Dc, which is the normalmap format the engine uses. For a color texture this would be DXT1 or DXT5.

Always make sure to generate the mipmaps when saving and make sure to have it set to "All".



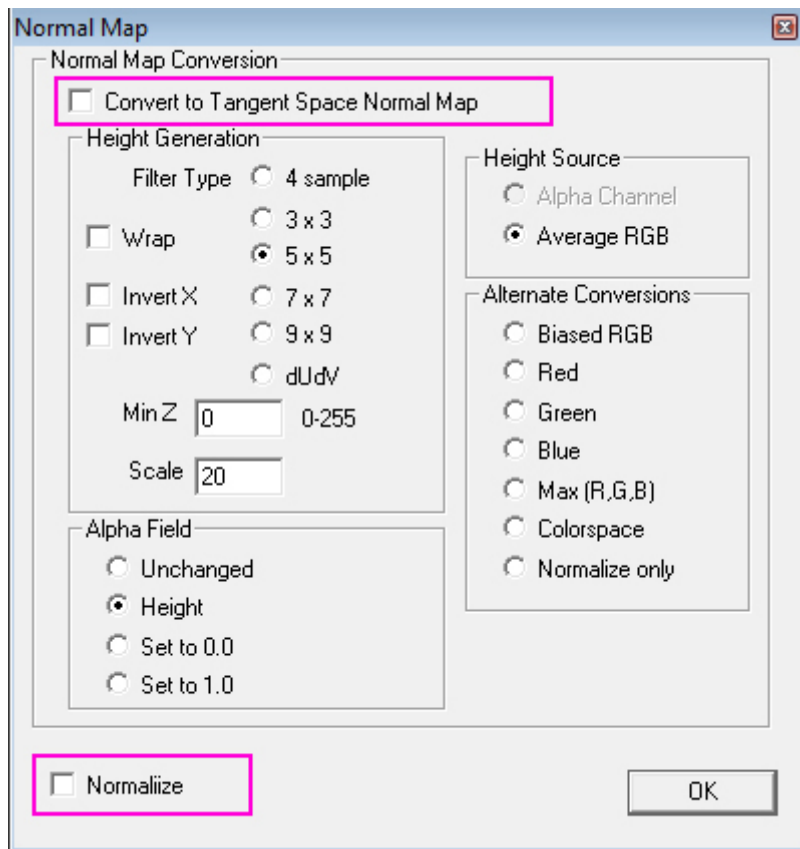
4) Mip map filers

The default box filter often gives subpar quality and the mipmaps, so good to choose something else to use for all images. "Catrom" is used here but there are others that work fine too. If the image has a lot of finer details it is worth to try a bit if it looks strange in-game.



5) Normalmap settings

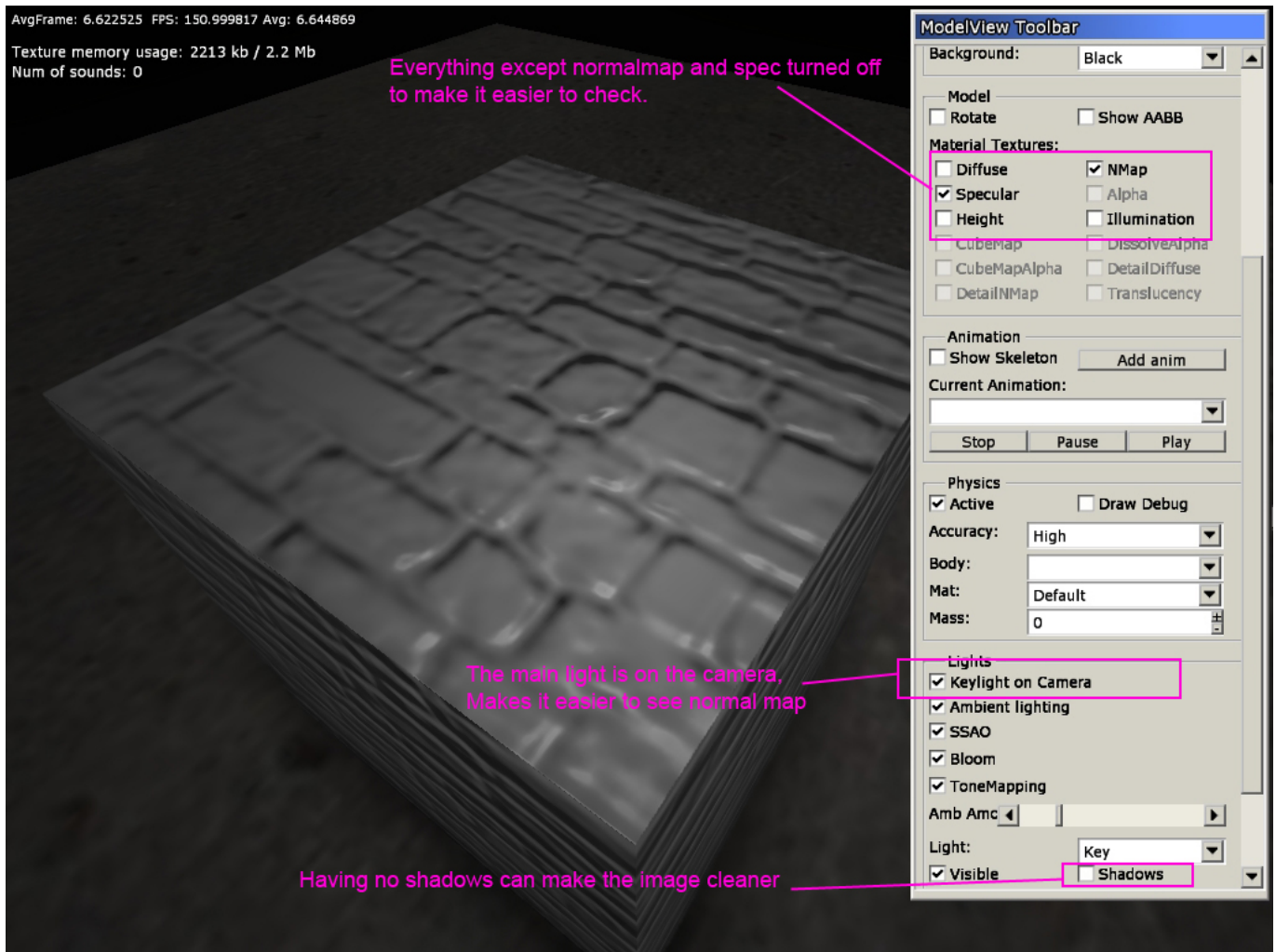
This is specific for normal maps. Simply make sure that all boxes are unchecked.



6) Check in the modelviewer

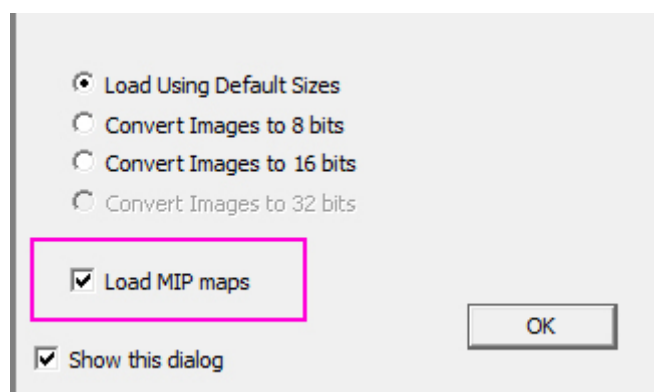
Once saved and exported, check so everything looks okay in the modelviewer. Having “keylight on camera checked” makes it easier to see the normals and turning of shadows can remove some jitter that the shadowing algorithm might produce.

Also make sure to turn off all texture except specular and normalmap to makes sure the normalmap looks okay.



7) Loading normal map

This step and the next one is not really needed but might be good just to see it is generated properly! First, when loading the texture make sure that you load the mipmaps aswell!

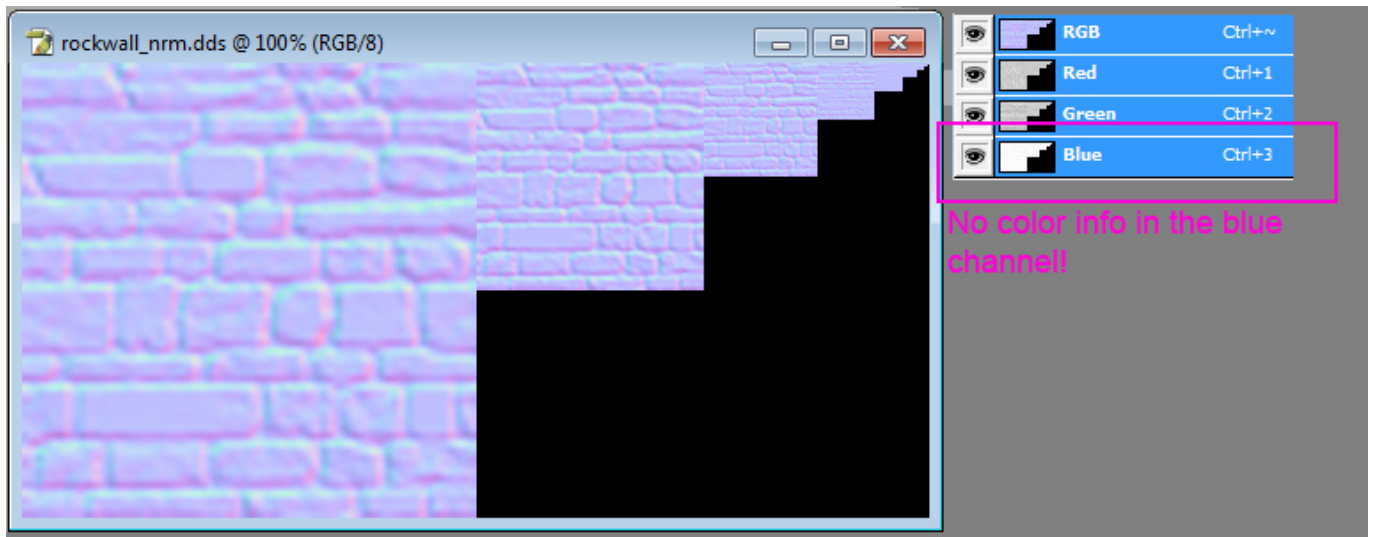


8) The loaded image

DO NOT SAVE THIS IMAGE!

Especially for normalmaps, the image you just loaded cannot be save.

You can see in the image that all mipmaps have been generated and you can also see that the Blue channel contains (almost) no information (what is there is due to the compression technique used)!



Cubemap Export

Overview

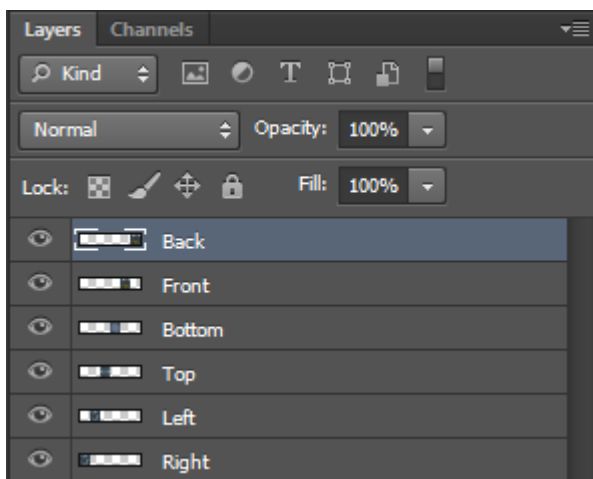
This tutorial will go through downscaling and exporting of cubemaps to make sure that borders stay correct.

Steps

1) Your texture

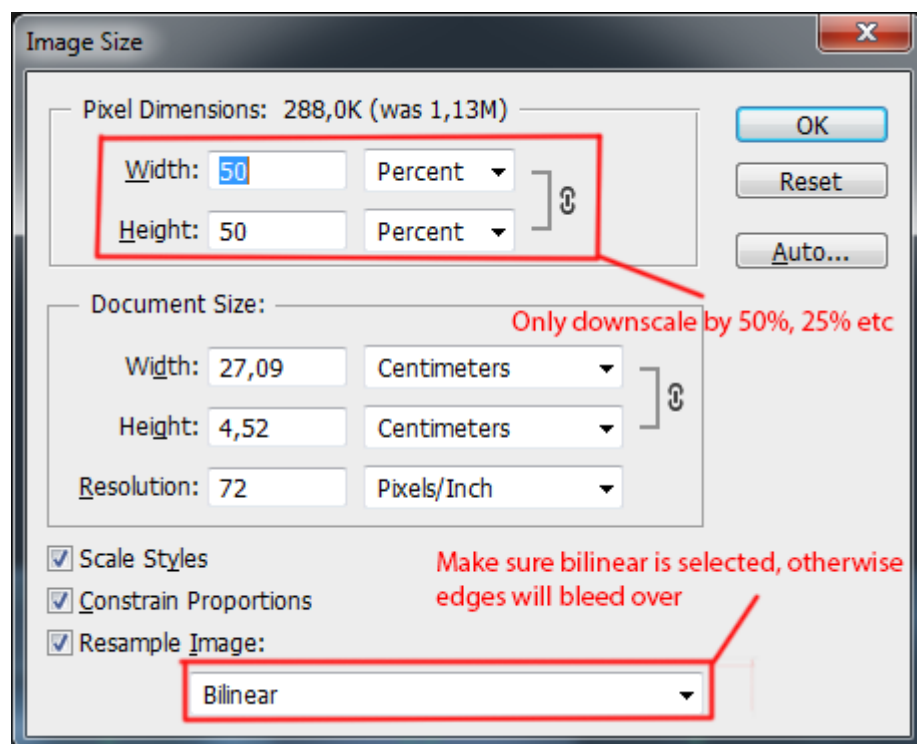
Place each of the cubemap sides on its own layer and place them after each other in a row. The image width should be 6 times larger then the height. The sides should be placed in the following order: Right, Left, Top, Bottom, Front, Back

`rltb.png}}`



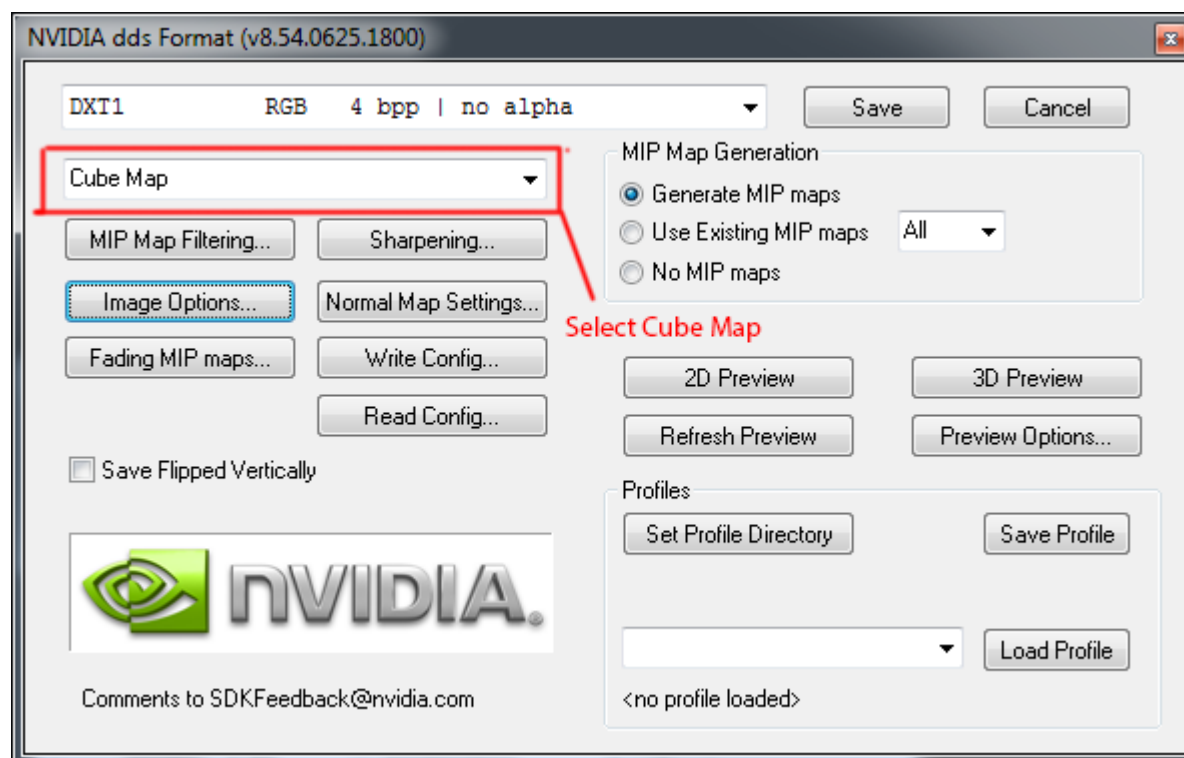
2) Downscale the image

If your image is too large in size it is a good idea to downscale it. To downscale correctly make sure that each side is on its own layer and then select Image > Image Size



3) Save the image

Select "Cube Map" as the image type and then follow the steps in the DDS Texture Export tutorial



From:
<https://wiki.frictionalgames.com/> - **Frictional Game Wiki**

Permanent link:
https://wiki.frictionalgames.com/hpl3/tutorials/texture_dds_export?rev=1355824330

Last update: **2012/12/18 09:52**

